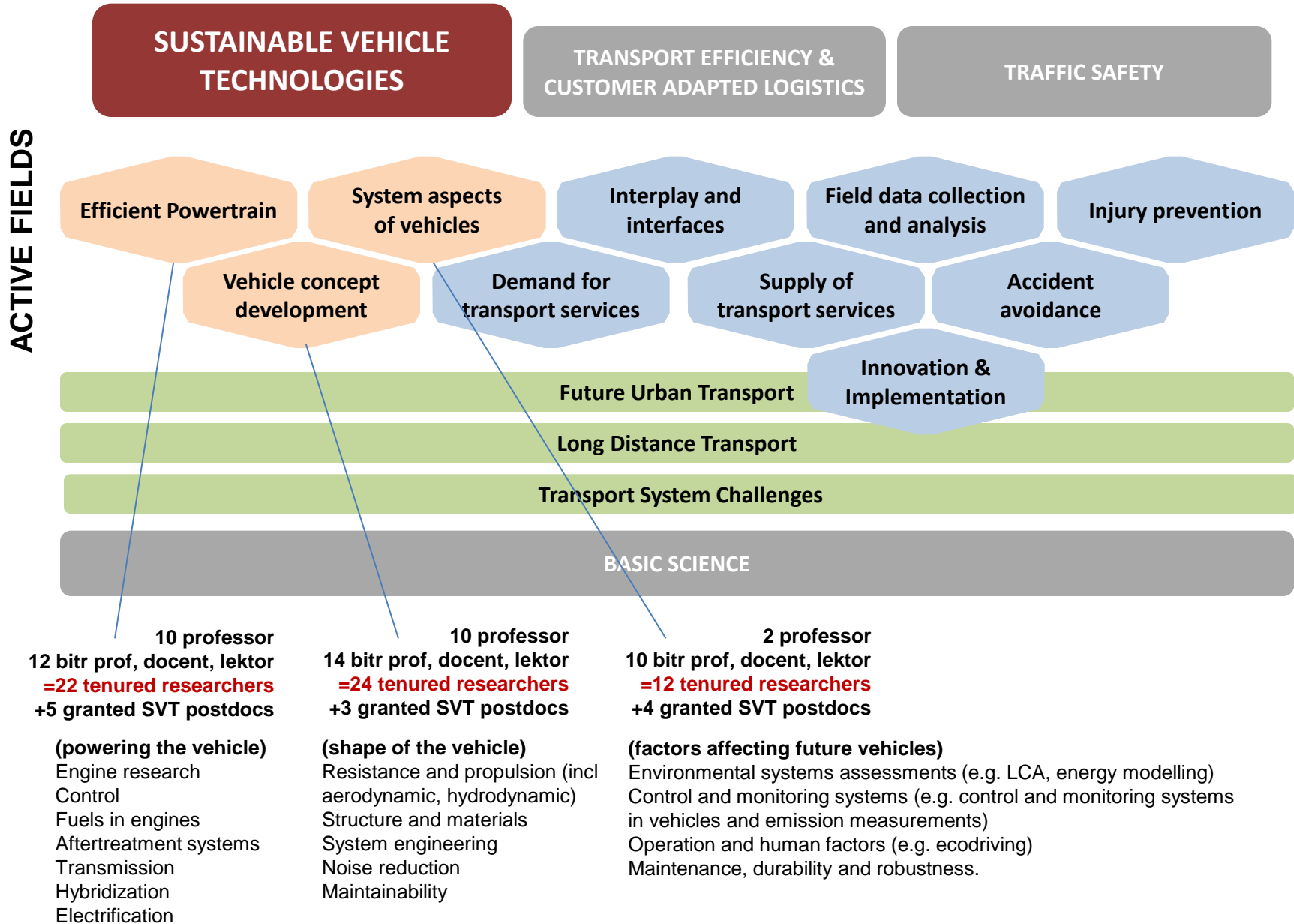


EXCELLENCE PROFILES WITHIN CHALMERS TRANSPORT RESEARCH



Research centres connected to Transport at Chalmers

**SUSTAINABLE VEHICLE
TECHNOLOGIES**

**TRANSPORT EFFICIENCY &
CUSTOMER ADAPTED LOGISTICS**

TRAFFIC SAFETY

**KCK
COMPETENCE CENTRE
FOR CATALYSIS**



CLOSER

VISION ZERO ACADEMY



URBSEC (Urban Safety and Societal Security Research Center)

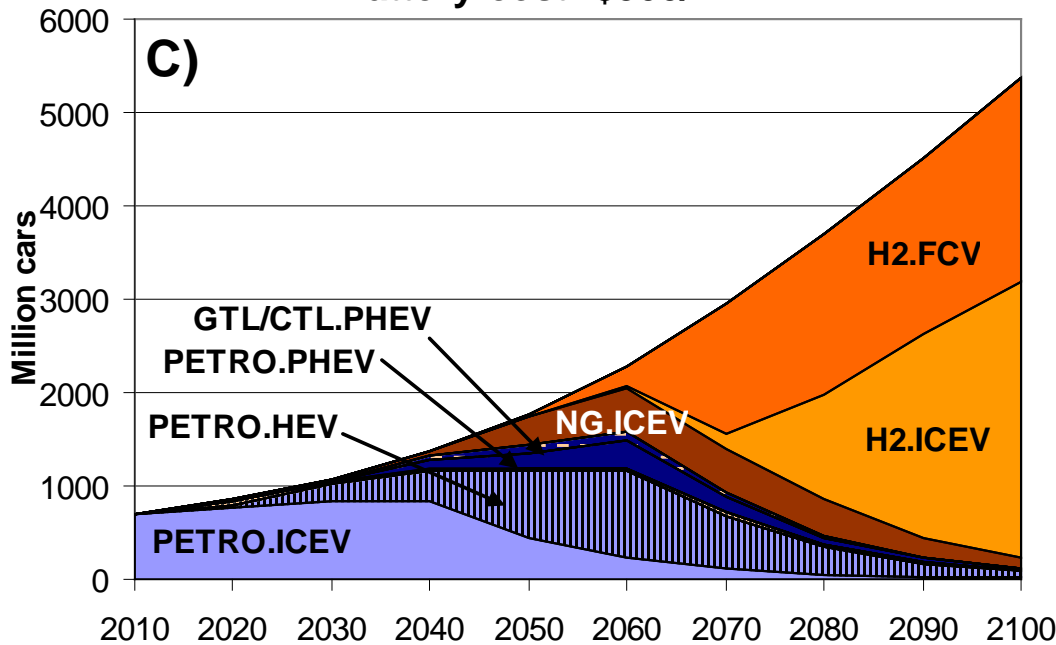
THE SWEDISH KNOWLEDGE CENTRE
FOR RENEWABLE FUELS



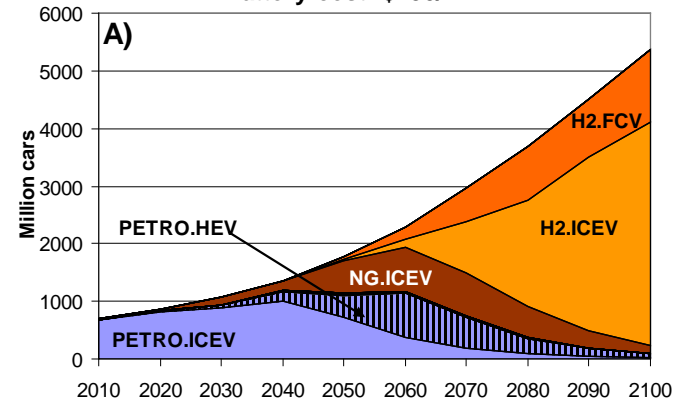
CHARMEC (Chalmers Railway Mechanics)

Kostnadseffektiva val av drivmedel och fordonstekniker vid en viss uppsättning antaganden.

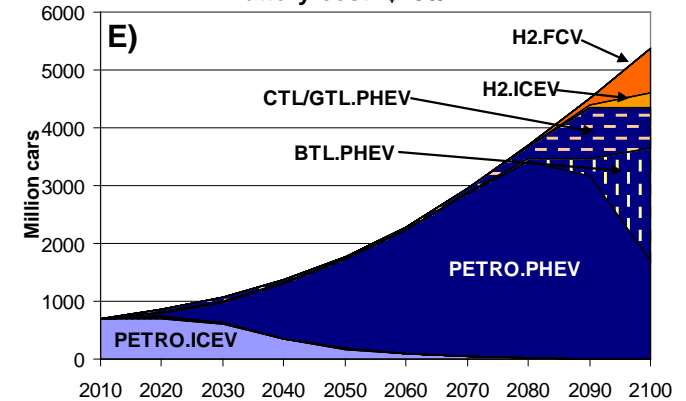
**Passenger vehicle fleet
Battery cost: \$300/kWh**



**Passenger vehicle fleet
Battery cost: \$450/kWh**



**Passenger vehicle fleet
Battery cost: \$150/kWh**



PETRO= Gasoline/Diesel
BTL= biofuels
CTL= fuels based on coal
GTL= fuels based on natural gas
NG= Natural gas
H2= Hydrogen

ICEV= Internal Combustion engine
FCV= Fuel cell vehicle
HEV= Hybrid electric vehicles
PHEV= Plug-in electric vehicles